

◀ REC VIDEO SIGNAL ◀ REC AUDIO SIGNAL

7

6

5

4

3

2

1

TO MAIN III

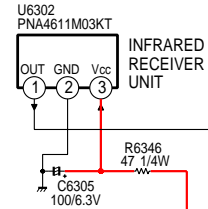
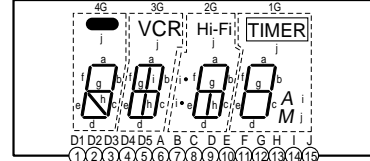
TO MAIN I

TO MAIN I

TO MAIN III

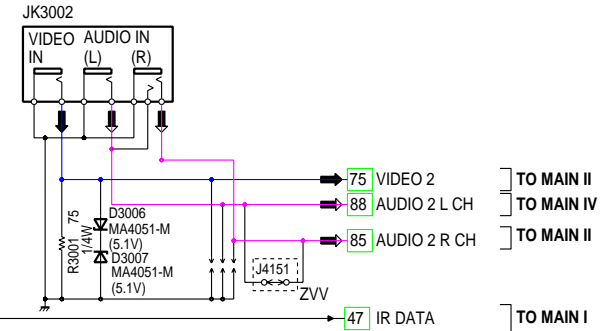
TO MAIN I

U6301 LNM144AP01 (LED DISPLAY PANEL)

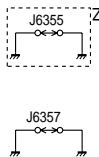


NOTE:
FOR SCHEMATIC DIAGRAM AND CIRCUIT BOARD LAYOUT NOTES,
REFER TO BEGINNING OF SCHEMATIC SECTION.

NOTE:
PARTS ENCLOSED IN DASHED LINES MARKED "Z" ARE NOT USED.

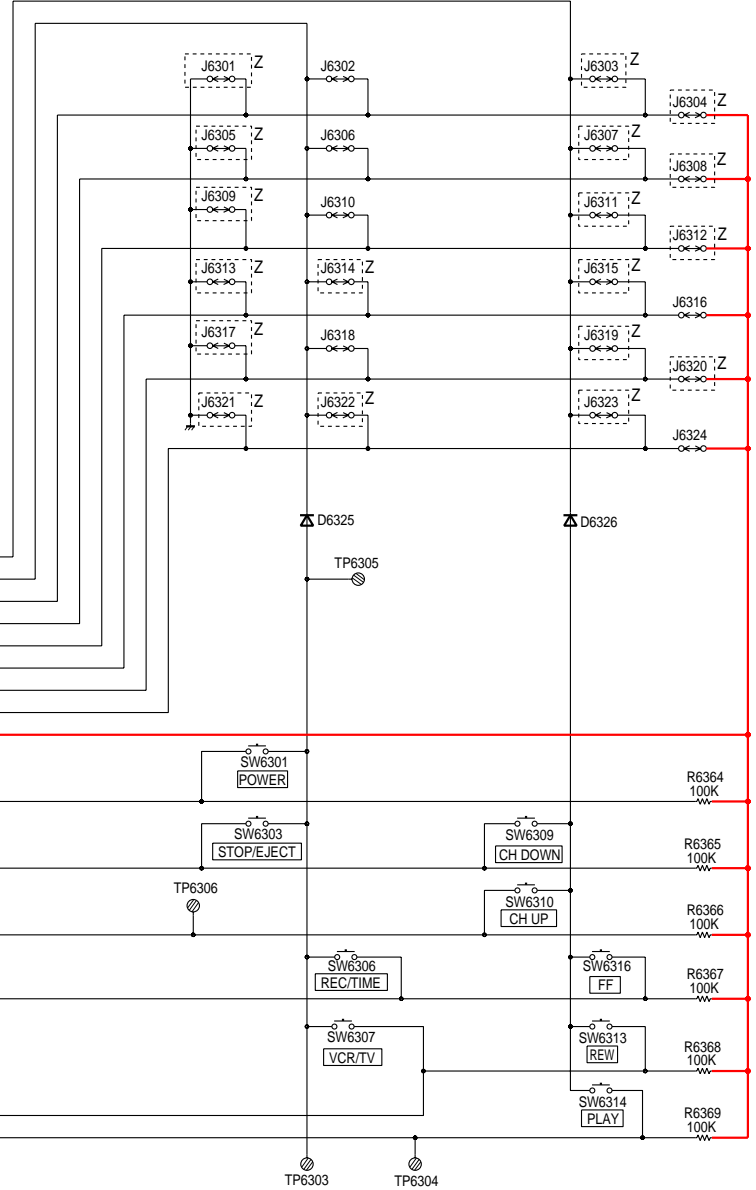
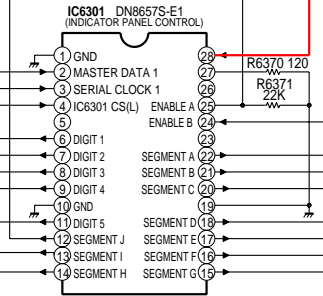


LED+5V 83
IC6301 CLK 16
SERIAL DATA1 40
SERIAL CLOCK1 42
IC6301 CS(L) 25



SCAN 2 55
SCAN 1 56
KEY DATA 0 57
KEY DATA 1 58
KEY DATA 2 59
KEY DATA 3 60
KEY DATA 4 61
KEY DATA 5 62
UNSW+5V(SYS.CTL) 79

KEY DATA 11 8
KEY DATA 12 14
KEY DATA 10 7
KEY DATA 13 15
KEY DATA 8 12
KEY DATA 9 13



UNLESS OTHERWISE SPECIFIED;
DIODES IS MA165
SWITCHES IS EVQ11A09K AND
WATTAGE OF RESISTORS IS 1/10W. VJBS6060